

MISSION BAY PARCEL F - PHASE I REPLAT

454-023

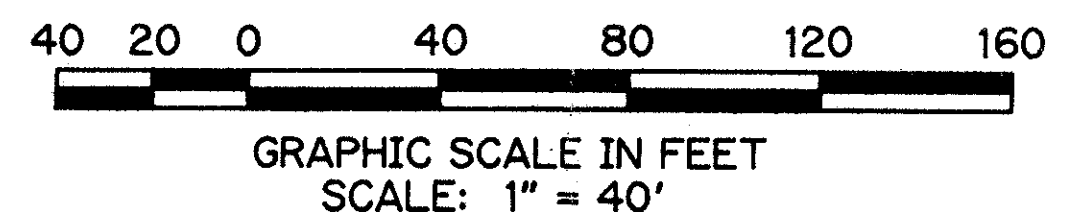
PREPARED BY
 MICHAEL D. AVIROM, P.L.S.
 AVIROM - HALL & ASSOCIATES, INC.
 50 S.W. 2ND AVENUE, SUITE 102
 BOCA RATON, FLORIDA 33432
 (407) 392-2594

A PART OF MISSION BAY, A P.U.D.
 LYING IN SECTION 13, TOWNSHIP 47 SOUTH, RANGE 41 EAST
 PALM BEACH COUNTY, FLORIDA

SHEET 2 OF 2

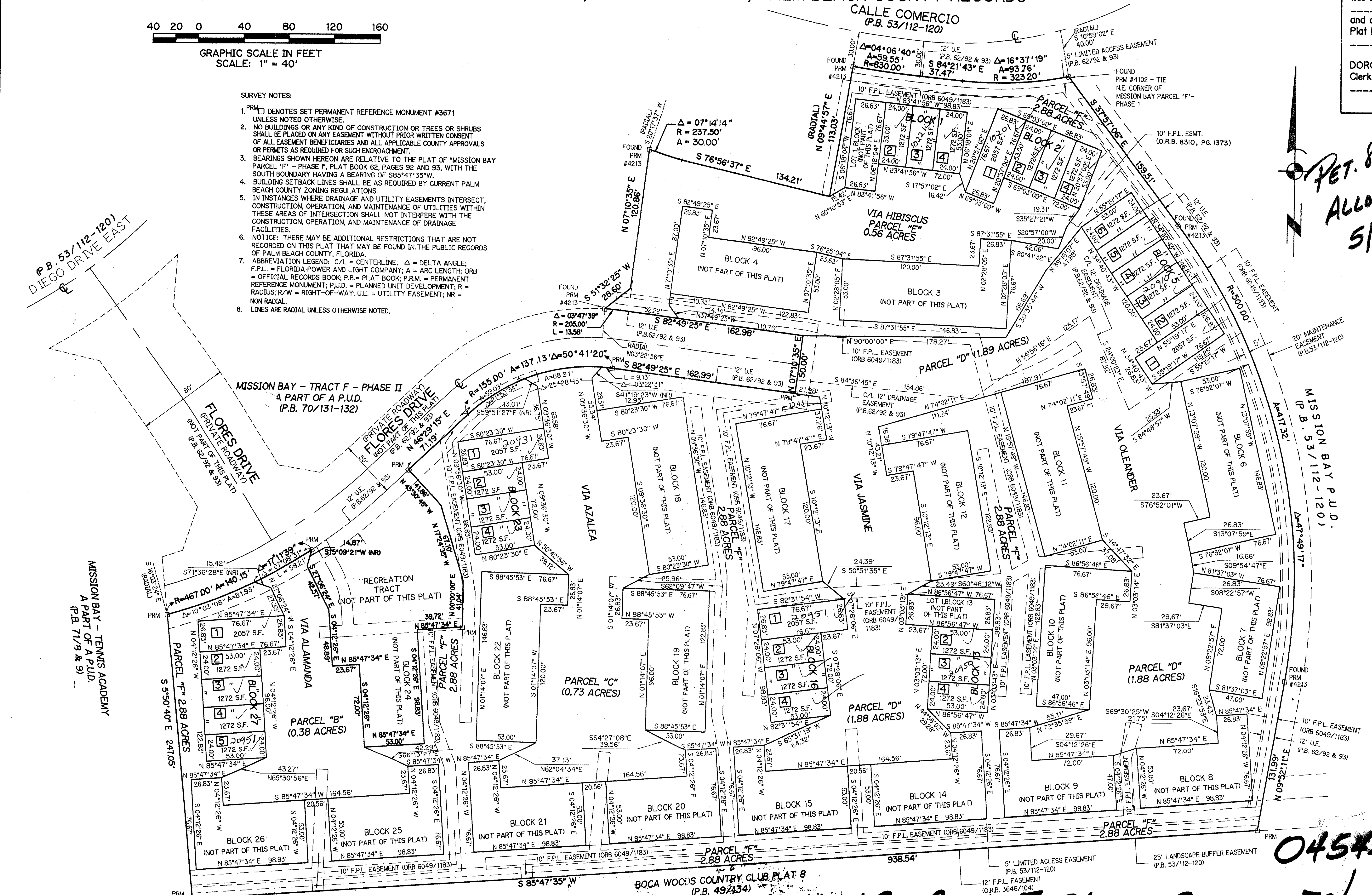
BEING A REPLAT OF A PORTION OF "MISSION BAY PARCEL 'F' - PHASE I"
 RECORDED IN PLAT BOOK 62, PAGES 92 AND 93, PALM BEACH COUNTY RECORDS

STATE OF FLORIDA
 COUNTY OF PALM BEACH
 This plat was filed for
 record at _____
 this _____ day of
 _____, 1994,
 and duly recorded in
 Plat Book _____, Pages
 _____ through _____
 DOROTHY H. WILKIN
 Clerk of Circuit Court



- SURVEY NOTES:**
1. PRM [] DENOTES SET PERMANENT REFERENCE MONUMENT #3671 UNLESS NOTED OTHERWISE.
 2. NO BUILDINGS OR ANY KIND OF CONSTRUCTION OR TREES OR SHRUBS SHALL BE PLACED ON ANY EASEMENT WITHOUT PRIOR WRITTEN CONSENT OF ALL EASEMENT BENEFICIARIES AND ALL APPLICABLE COUNTY APPROVALS OR PERMITS AS REQUIRED FOR SUCH ENCROACHMENT.
 3. BEARINGS SHOWN HEREON ARE RELATIVE TO THE PLAT OF "MISSION BAY PARCEL 'F' - PHASE I", PLAT BOOK 62, PAGES 92 AND 93, WITH THE SOUTH BOUNDARY HAVING A BEARING OF S85°47'35"W.
 4. BUILDING SETBACK LINES SHALL BE AS REQUIRED BY CURRENT PALM BEACH COUNTY ZONING REGULATIONS.
 5. IN INSTANCES WHERE DRAINAGE AND UTILITY EASEMENTS INTERSECT, CONSTRUCTION, OPERATION, AND MAINTENANCE OF UTILITIES WITHIN THESE AREAS OF INTERSECTION SHALL NOT INTERFERE WITH THE CONSTRUCTION, OPERATION, AND MAINTENANCE OF DRAINAGE FACILITIES.
 6. NOTICE: THERE MAY BE ADDITIONAL RESTRICTIONS THAT ARE NOT RECORDED ON THIS PLAT THAT MAY BE FOUND IN THE PUBLIC RECORDS OF PALM BEACH COUNTY, FLORIDA.
 7. ABBREVIATION LEGEND: C/L = CENTERLINE; Δ = DELTA ANGLE; F.P.L. = FLORIDA POWER AND LIGHT COMPANY; A = ARC LENGTH; ORB = OFFICIAL RECORDS BOOK; P.B. = PLAT BOOK; P.R.M. = PERMANENT REFERENCE MONUMENT; P.U.D. = PLANNED UNIT DEVELOPMENT; R = RADIUS; R/W = RIGHT-OF-WAY; U.E. = UTILITY EASEMENT; NR = NON-RADIAL.
 8. LINES ARE RADIAL UNLESS OTHERWISE NOTED.

PET. 84-95
 ALLOC. #0001
 5/3/3/M



MISSION BAY PARCEL F - PHASE I REPLAT
 7/3/7
 454-023
 84-95
 #0001
 5/3/3/M

0454-023

MISSION BAY PARCEL F - PHASE I REPLAT 73/7